



C&S Architects, Engineers & Landscape Architect, PLLC
 499 Col. Eileen Collins Blvd.
 Syracuse, New York 13212
 Phone: 315-455-2000
 Fax: 315-455-9667
 www.cscos.com



**OSWEGO, NY
 GRAIN HANDLING SYSTEMS
 IMPROVEMENT PROJECT
 PORT OF OSWEGO**

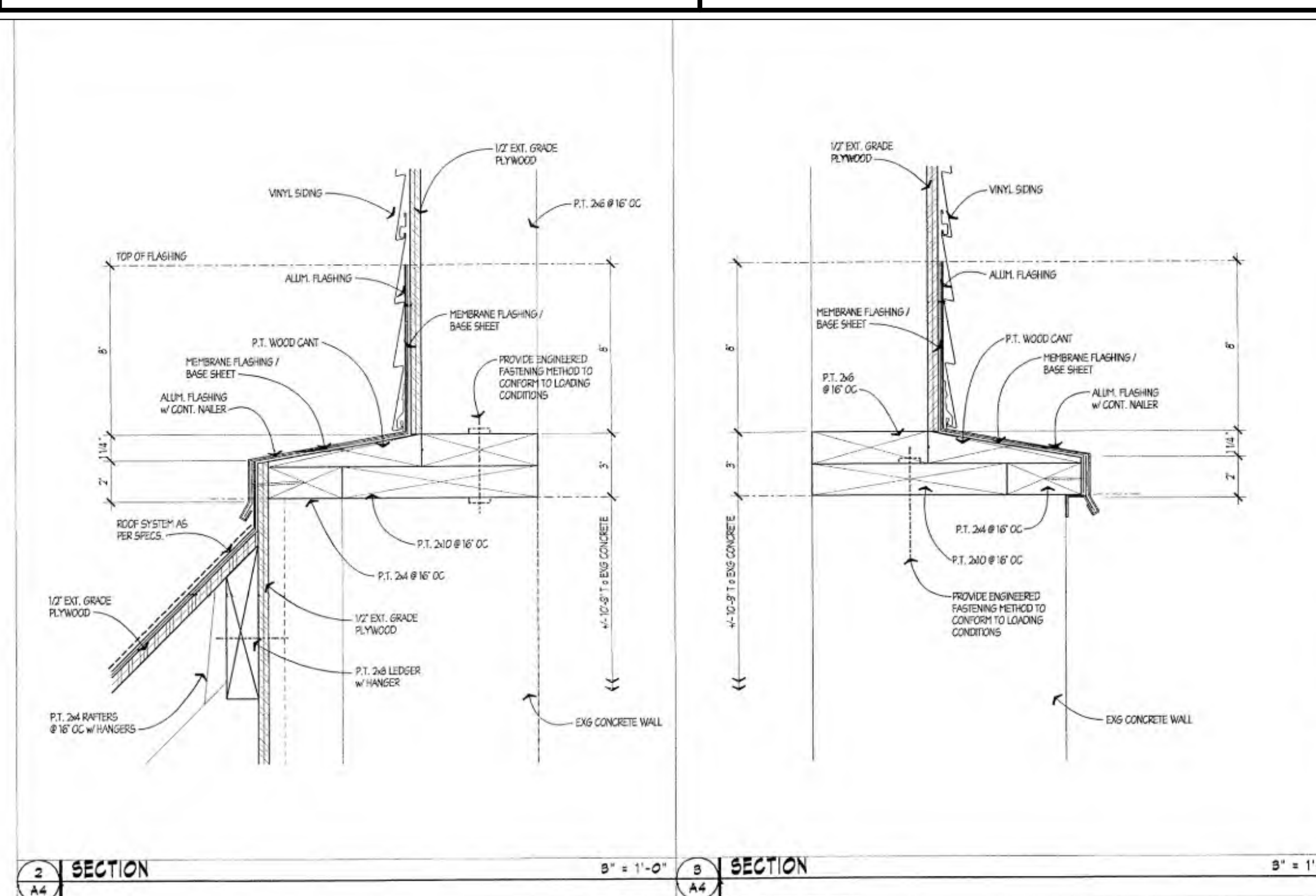
MARK	DATE	DESCRIPTION
REVISIONS		

PROJECT NO:	301.031.001
DATE:	JULY 10, 2020
DRAWN BY:	-
DESIGNED BY:	-
CHECKED BY:	-

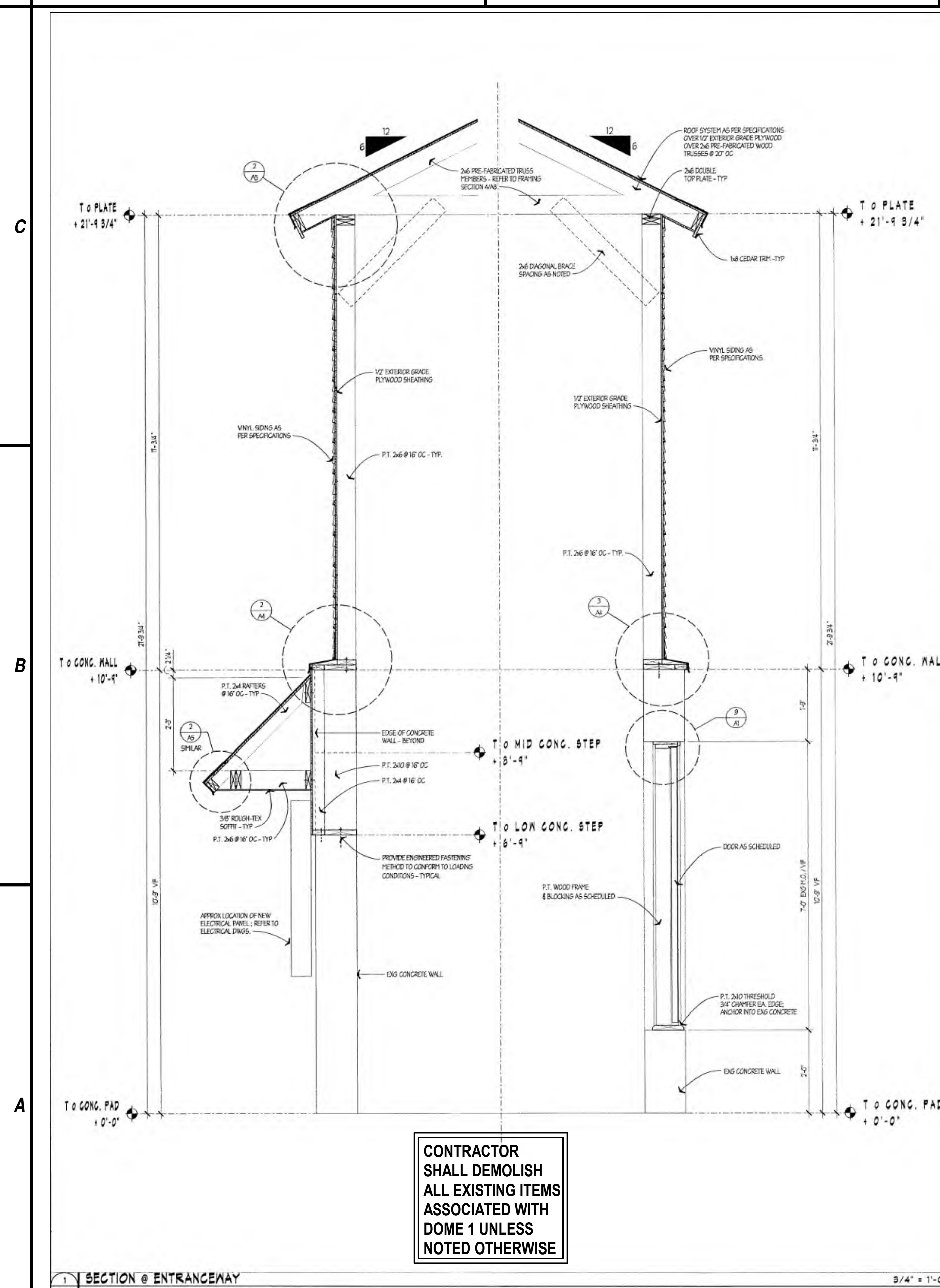
NO ALTERATION PERMITTED HEREON EXCEPT AS PROVIDED UNDER SECTION 7209 SUBDIVISION 2 OF THE NEW YORK EDUCATION LAW

EXISTING ENTRANCEWAY SECTIONS & DETAILS-FOR REFERENCE

AD-501



SECTION 2 SECTION 3
 3/4" = 1'-0" 3/4" = 1'-0"



SECTION @ ENTRANCEWAY
 3/4" = 1'-0"

CONTRACTOR SHALL DEMOLISH ALL EXISTING ITEMS ASSOCIATED WITH DOME 1 UNLESS NOTED OTHERWISE

1

2

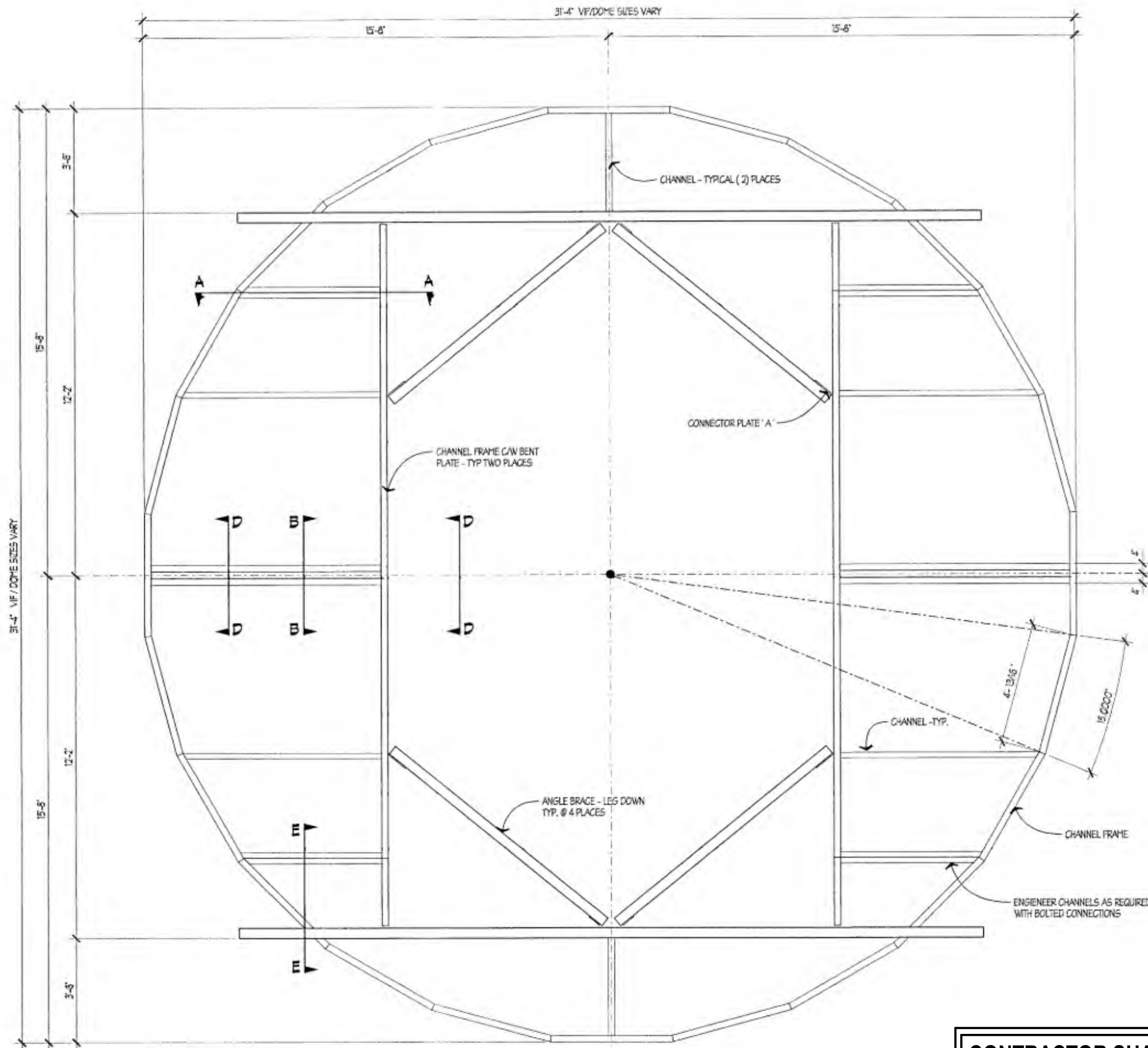
3

4

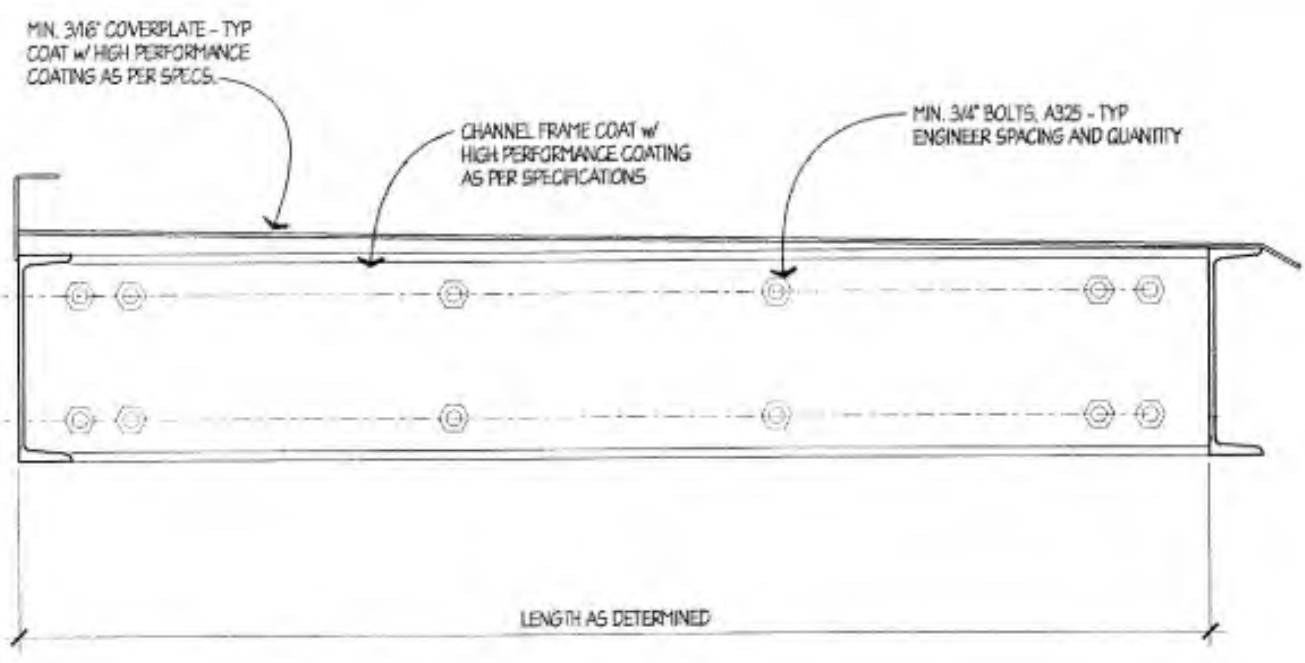
C

B

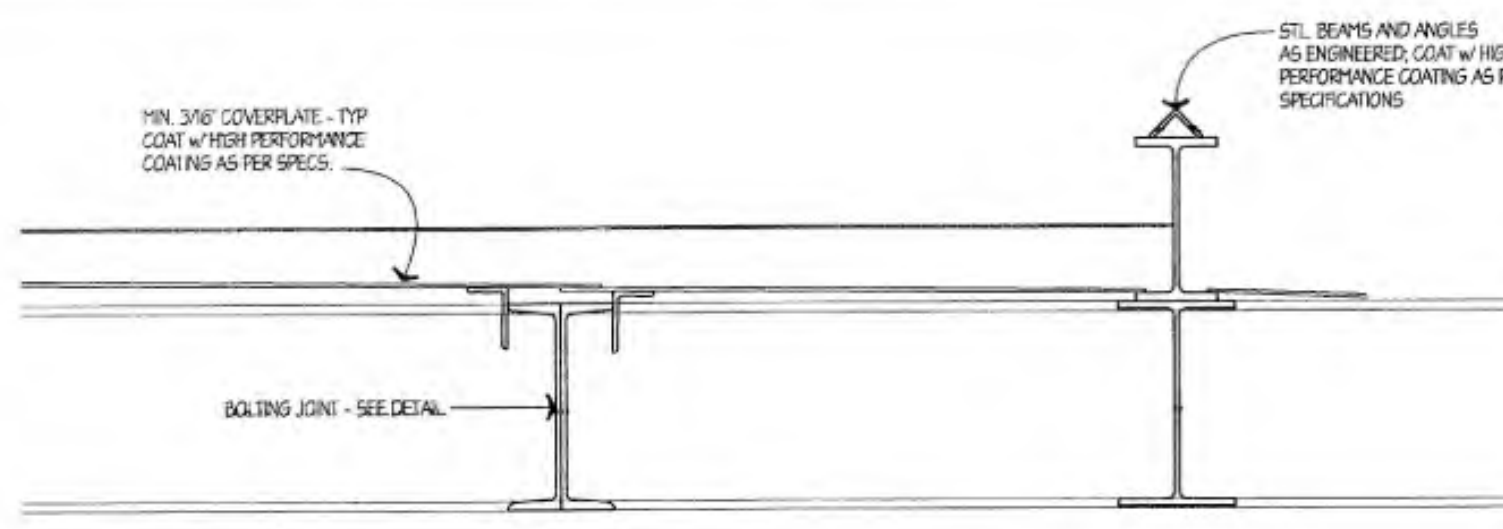
A



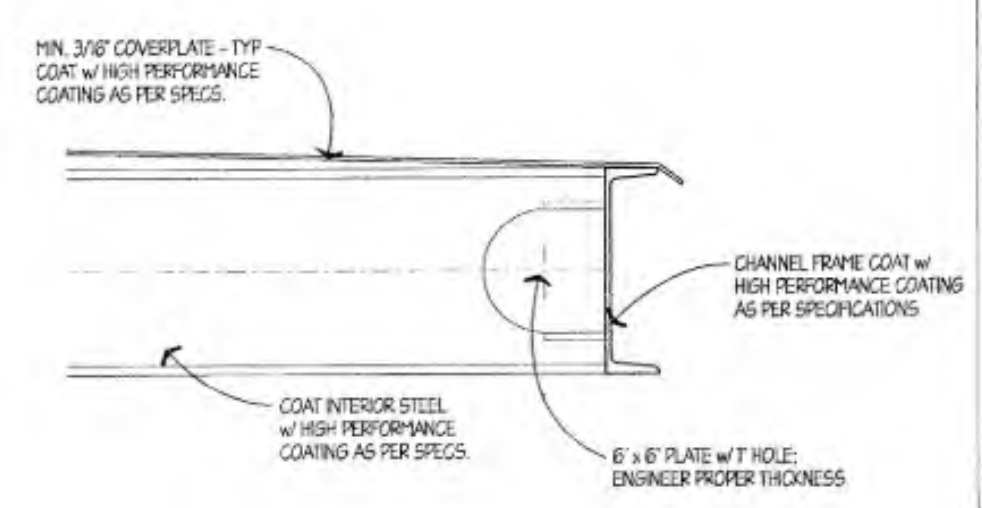
CONTRACTOR SHALL REMOVE AND SALVAGE ALL EXISTING ITEMS ASSOCIATED WITH THE ROOF HATCH ON DOME 1 (WITHOUT DAMAGE) AND PROVIDE TO THE PORT OF OSWEGO



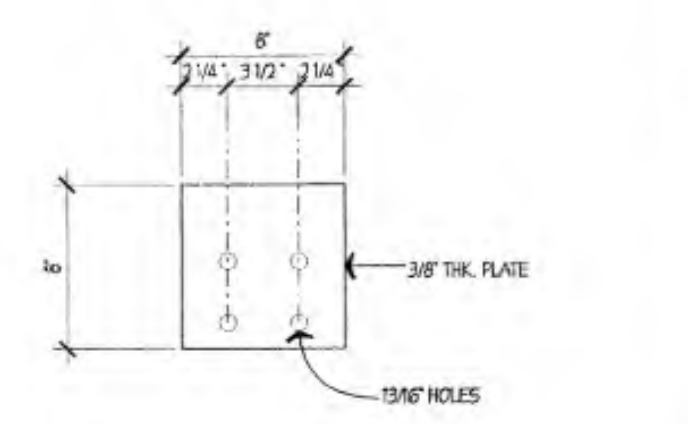
SECTION A - A 1 1/2" = 1'-0" TYPICAL FOR DOMES #1, #2 AND #3



SECTION E - E 1 1/2" = 1'-0" TYPICAL FOR DOMES #1, #2 AND #3



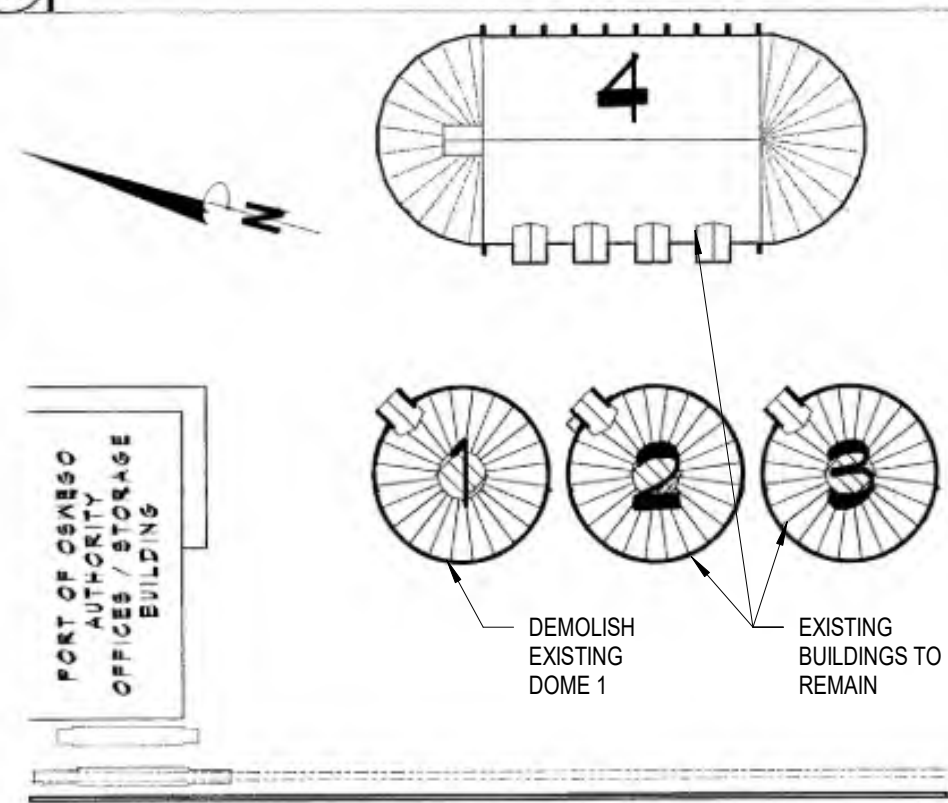
SECTION F - F 1 1/2" = 1'-0" TYPICAL FOR DOMES #1, #2 AND #3



NOTE: SIMULATED DESIGN PROVIDE ENGINEERING TO MEET LOADING CONDITIONS

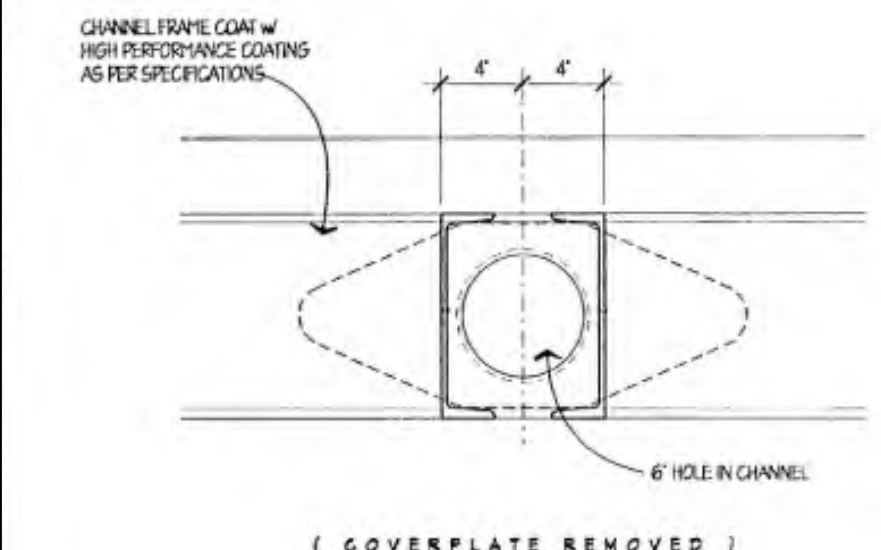
GENERAL STRUCTURAL NOTES

- THIS STRUCTURAL DESIGNATED SYSTEM IS A PERFORMANCE BASED DESIGN. IT REQUIRES THE COMPLETE DESIGN BY A NEW YORK STATE LICENSED STRUCTURAL ENGINEER WITH DRAWINGS, ACCOMPANYING SPECIFICATIONS AND CALCULATIONS TO SHOW COMPLIANCE FOR LOADING AS INDICATED. SNOW LOADING FOR 90 LBS. AND WINDLOADING - UPLIFT AND SIDE PRESSURE FOR 110 N.P.H.
- ALL EXPOSED STEEL COMPONENTS INTERIOR OR EXTERIOR. STRUCTURAL AND NON-STRUCTURAL ARE TO BE COATED WITH A HIGH PERFORMANCE COATING PER SPECIFICATIONS.
- CONFORM WITH BEAM DESIGN TO THE TOLERANCES OF THE ORIGINAL CONCRETE WALL.
- ALL STEEL SHALL CONFORM TO ASTM A36 STEEL OR BETTER.
- ALL STEEL SHALL HOT DIP GALVANIZED AFTER FABRICATION.
- PROPERLY ENGINEER ALL CHANNELS, FRAMES, PLATES, BOLTS AND CONNECTIONS FOR LOADING CONDITIONS AS INDICATED.

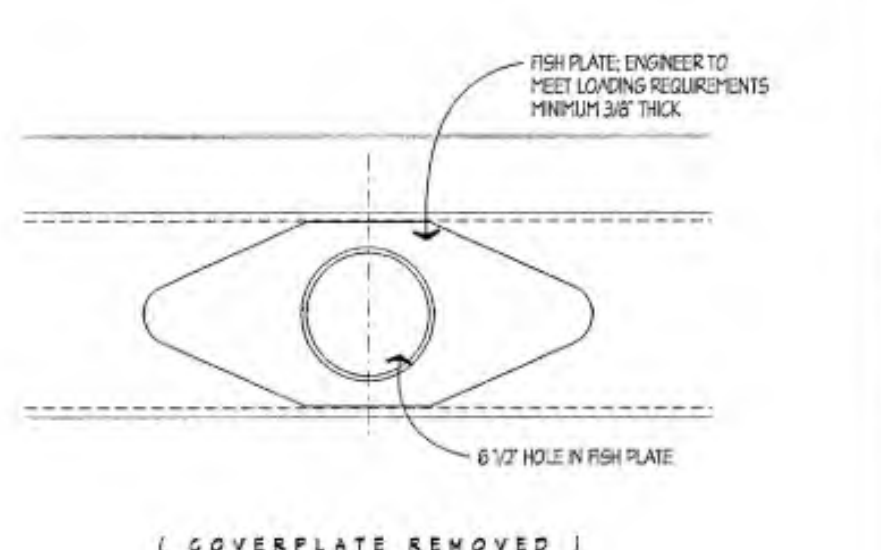


GENERAL NOTES NO SCALE TYPICAL FOR DOMES #1, #2 AND #3 **KEYPLAN** N.T.S.

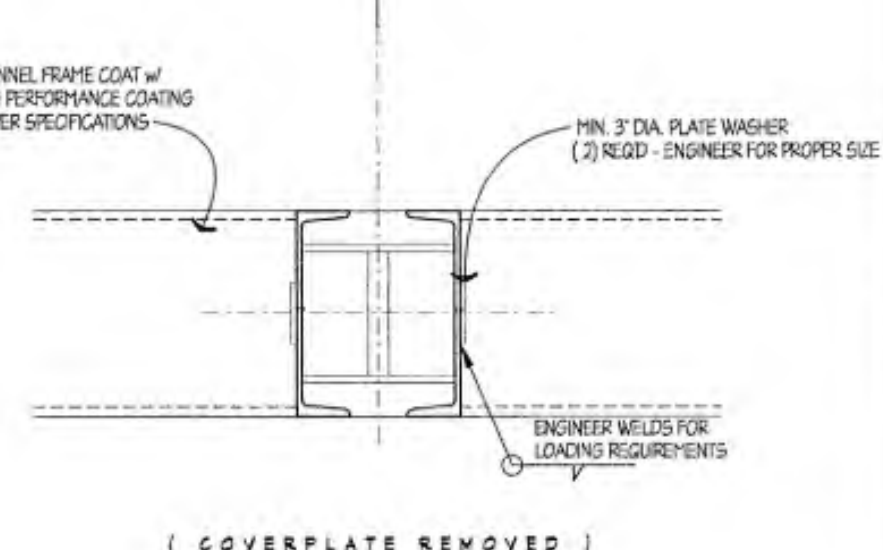
SHIP LOADING HATCH FRAME PLAN 5/8" = 1'-0" TYPICAL FOR DOMES #1, #2 AND #3



SECTION B - B 1 1/2" = 1'-0" TYPICAL FOR DOMES #1, #2 AND #3



SECTION C - C 1 1/2" = 1'-0" TYPICAL FOR DOMES #1, #2 AND #3



SECTION D - D 1 1/2" = 1'-0" TYPICAL FOR DOMES #1, #2 AND #3



C&S Architects, Engineers & Landscape Architect, PLLC
499 Col. Eileen Collins Blvd.
Syracuse, New York 13212
Phone: 315-455-2000
Fax: 315-455-9667
www.cscos.com



**OSWEGO, NY
GRAIN HANDLING SYSTEMS
IMPROVEMENT PROJECT
PORT OF OSWEGO**

MARK	DATE	DESCRIPTION
REVISIONS		

PROJECT NO:	301.031.001
DATE:	JULY 10, 2020
DRAWN BY:	-
DESIGNED BY:	-
CHECKED BY:	-

NO ALTERATION PERMITTED HEREON EXCEPT AS PROVIDED UNDER SECTION 7209 SUBDIVISION 2 OF THE NEW YORK EDUCATION LAW

EXISTING ROOF HATCH FRAME DETAILS-FOR REFERENCE

AD-503



C&S Architects, Engineers & Landscape Architect, PLLC
 499 Col. Eileen Collins Blvd.
 Syracuse, New York 13212
 Phone: 315-455-2000
 Fax: 315-455-9667
 www.cscos.com

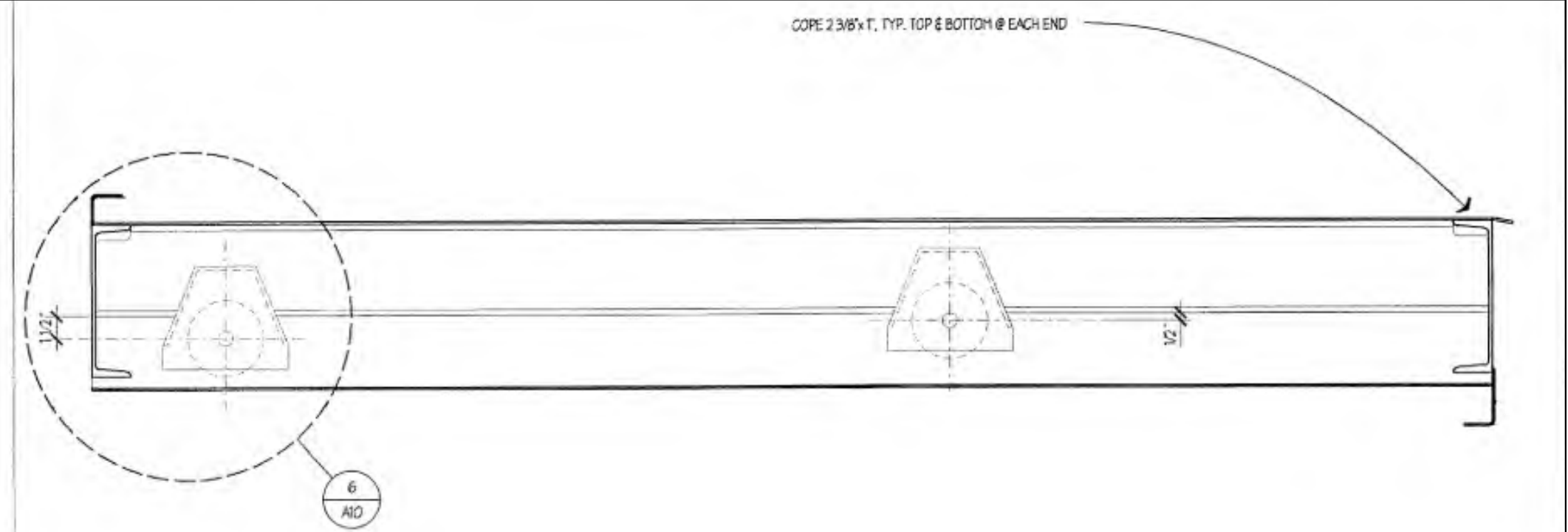


**OSWEGO, NY
 GRAIN HANDLING SYSTEMS
 IMPROVEMENT PROJECT
 PORT OF OSWEGO**

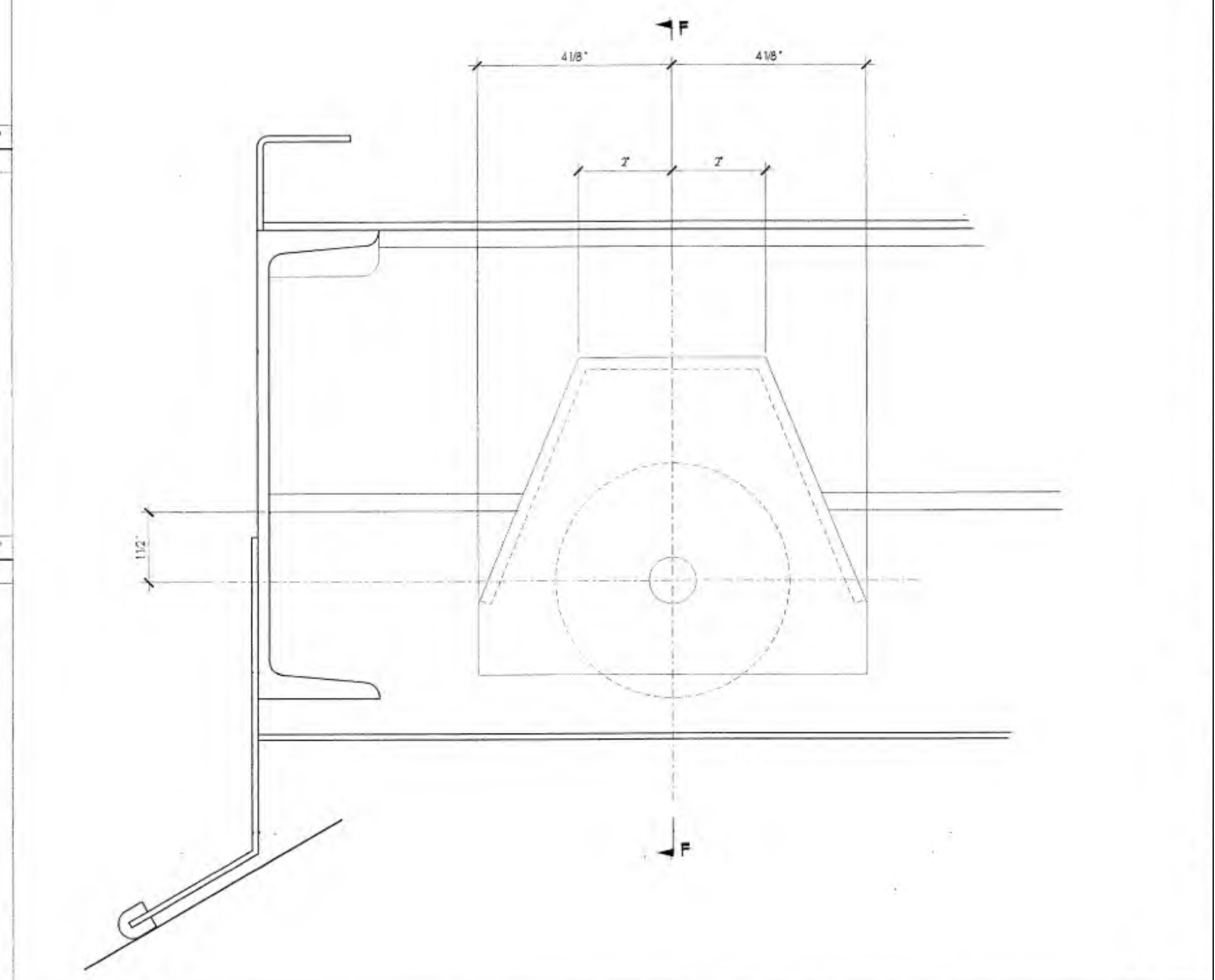
MARK	DATE	DESCRIPTION
REVISIONS		
PROJECT NO:	301.031.001	
DATE:	JULY 10, 2020	
DRAWN BY:		
DESIGNED BY:		
CHECKED BY:		
NO ALTERATION PERMITTED HEREON EXCEPT AS PROVIDED UNDER SECTION 7209 SUBDIVISION 2 OF THE NEW YORK EDUCATION LAW		

EXISTING ROOF HATCH DOOR DETAILS-FOR REFERENCE

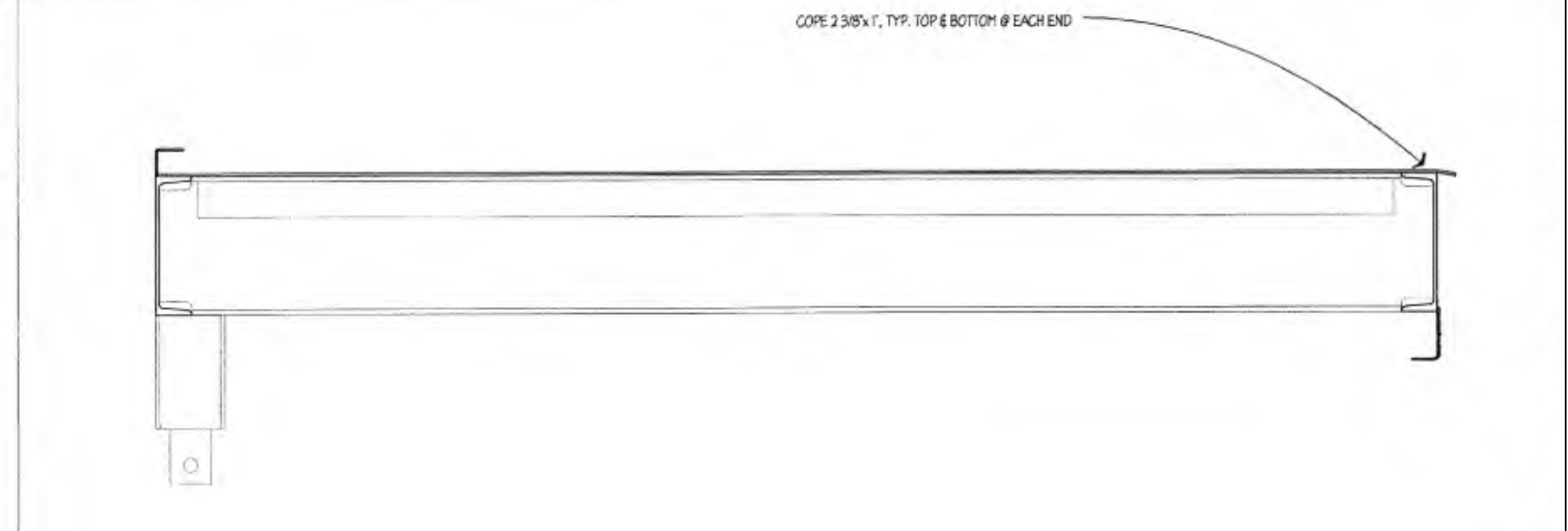
AD-504



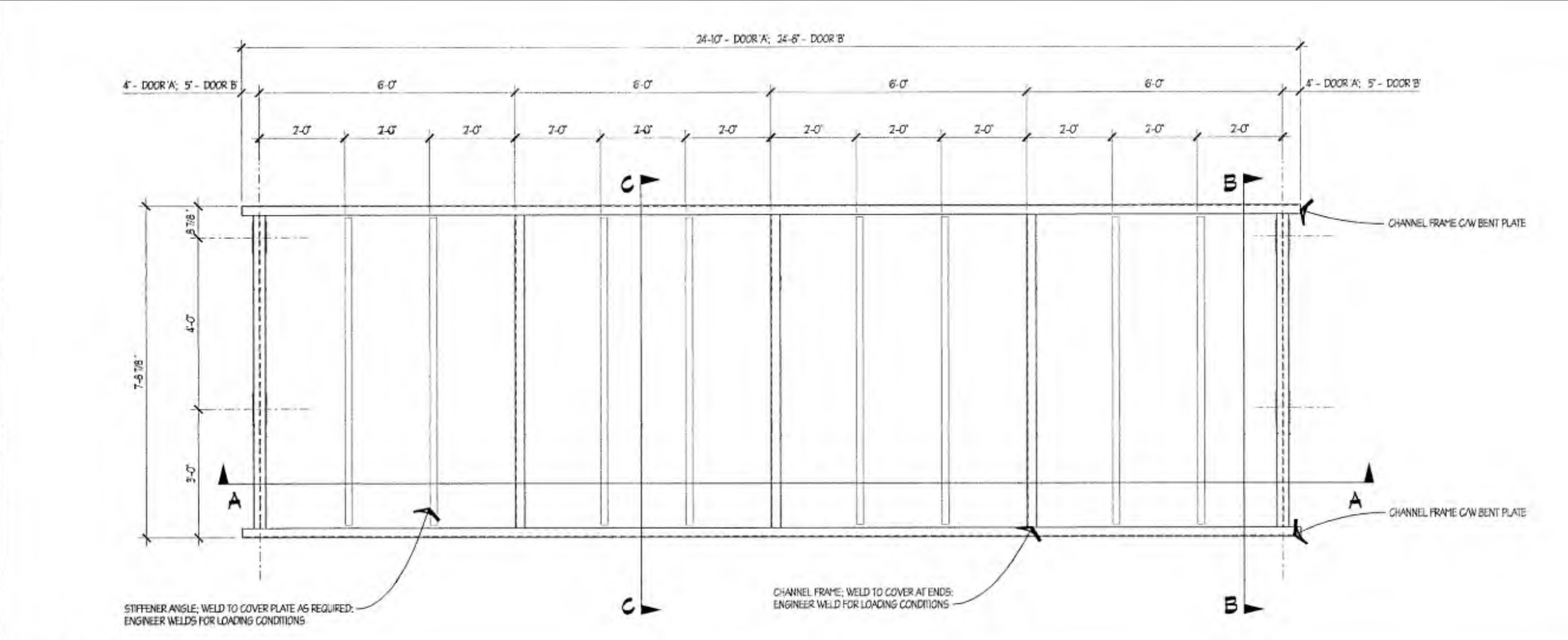
SECTION 'B - B' 1 1/2" = 1'-0"



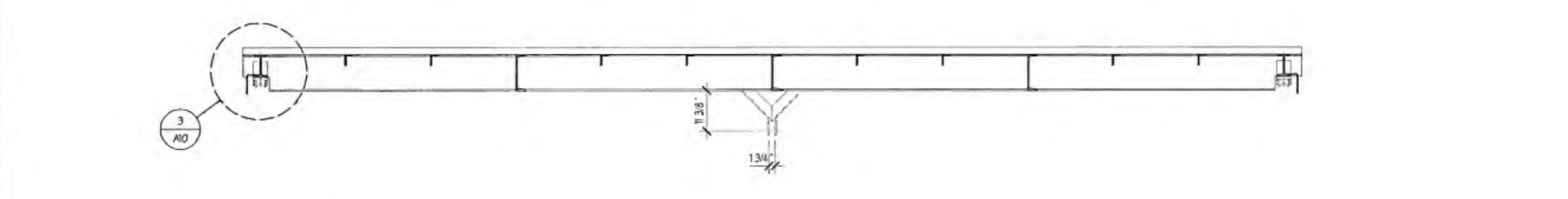
SECTION 'E - E' 6" = 1'-0"



SECTION 'C - C' 1 1/2" = 1'-0"



1 ROOF HATCH DOOR SECTION 1/2" = 1'-0"



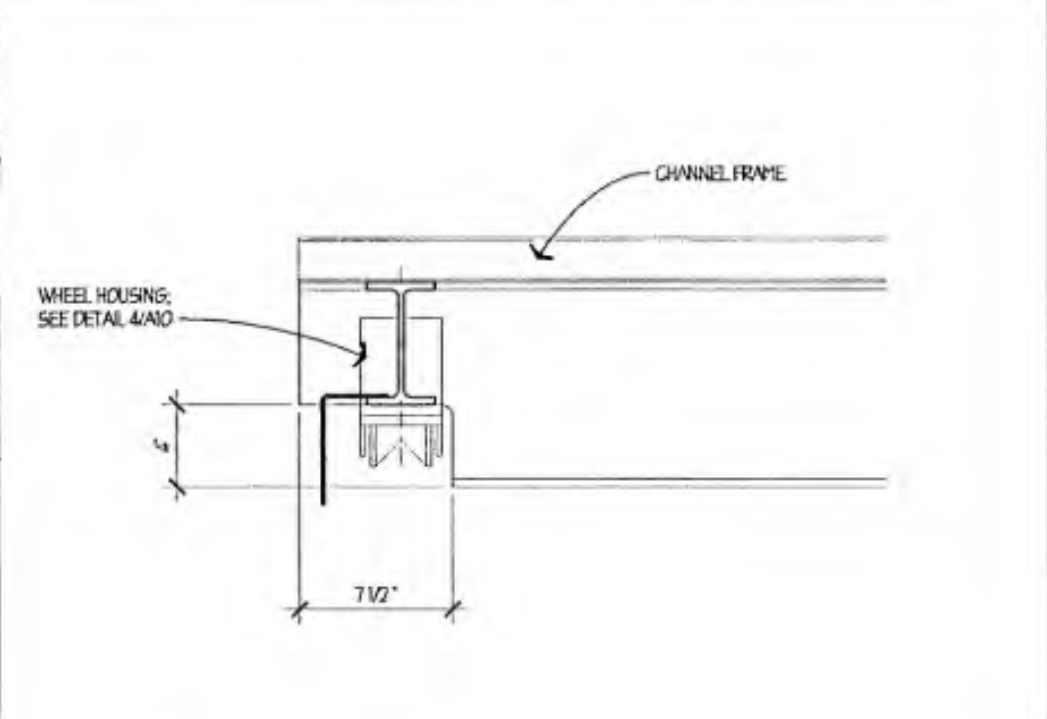
2 ROOF HATCH DOOR SECTION 1/2" = 1'-0"

CONTRACTOR SHALL REMOVE AND SALVAGE ALL EXISTING ITEMS ASSOCIATED WITH THE ROOF HATCH ON DOME 1 (WITHOUT DAMAGE) AND PROVIDE TO THE PORT OF OSWEGO

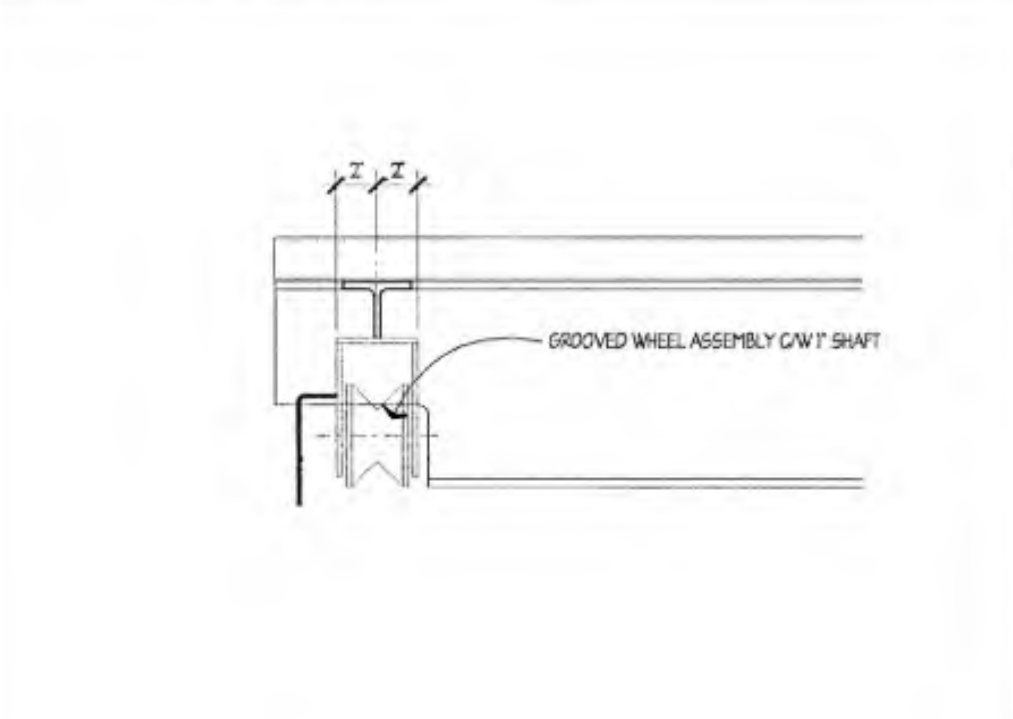
GENERAL STRUCTURAL NOTES

1. THIS STRUCTURAL DESIGNATED SYSTEM IS A PERFORMANCE BASED DESIGN. IT REQUIRES THE COMPLETE DESIGN BY A NEW YORK STATE LICENSED STRUCTURAL ENGINEER WITH DRAWINGS, ACCOMPANYING SPECIFICATIONS, AND CALCULATIONS TO SHOW COMPLIANCE FOR LOADINGS AS INDICATED, SNOW LOADINGS FOR 90 LBS. AND WINDLOADINGS - UPLIFT AND SIDE PRESSURE FOR 110 M.P.H.
2. ALL EXPOSED STEEL COMPONENTS INTERIOR AND EXTERIOR, STRUCTURAL AND NON-STRUCTURAL ARE TO BE COATED WITH A HIGH PERFORMANCE COATING PER SPECIFICATIONS.
3. CONFORM SILL BEAM DESIGN TO THE TOLERANCES OF THE ORIGINAL CONCRETE WALL.
4. ALL STEEL SHALL CONFORM TO ASTM A36 STEEL OR BETTER.
5. ALL STEEL SHALL HOT DIP GALVANIZED AFTER FABRICATION.
6. PROPERLY ENGINEER ALL CHANNELS, FRAMES, PLATES, BOLTS AND CONNECTIONS FOR LOADING CONDITIONS AS INDICATED.

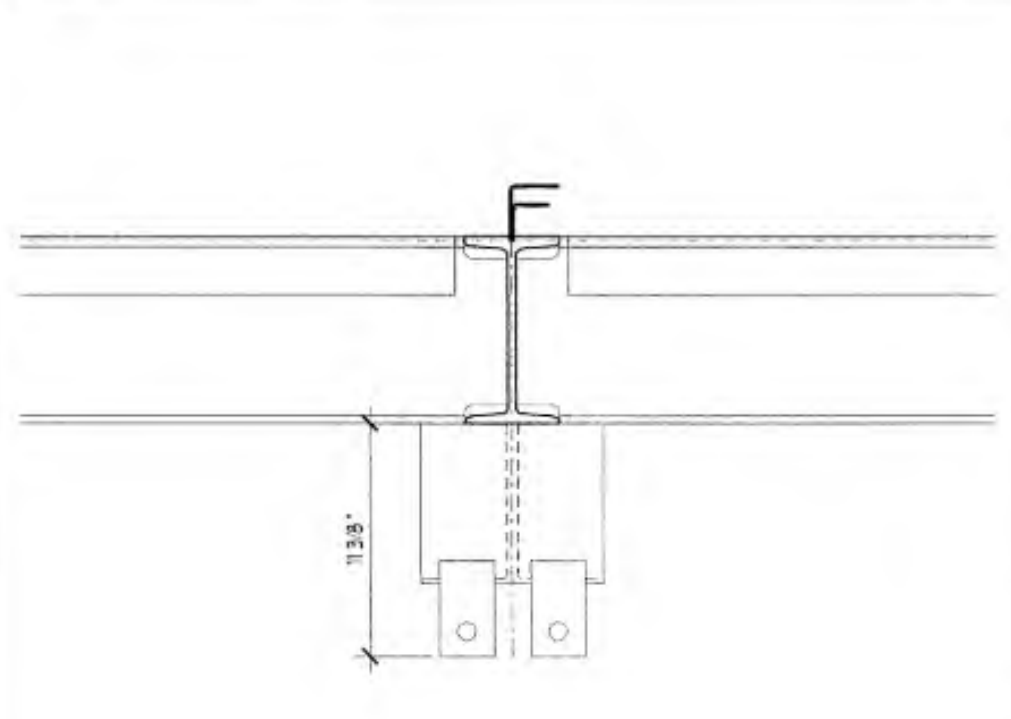
3 GENERAL NOTES NO SCALE



3 DETAIL 'D' 1 1/2" = 1'-0"



4 DETAIL 'F - F' 1 1/2" = 1'-0"



5 ASSEMBLY DETAIL 1 1/2" = 1'-0"